



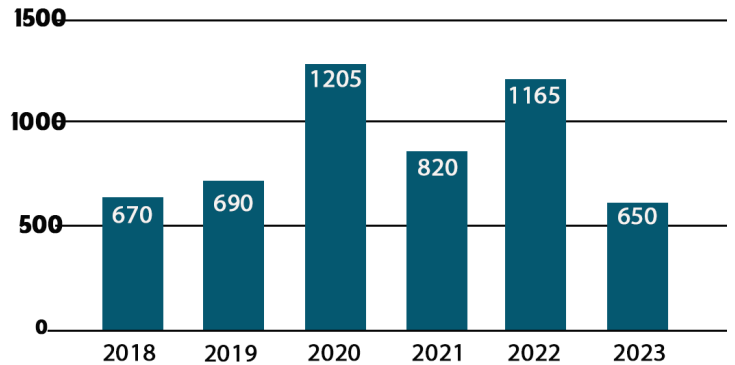
Community Science at Butterfly Landing

Multi-year pollinator count in Pine Point Regional Park

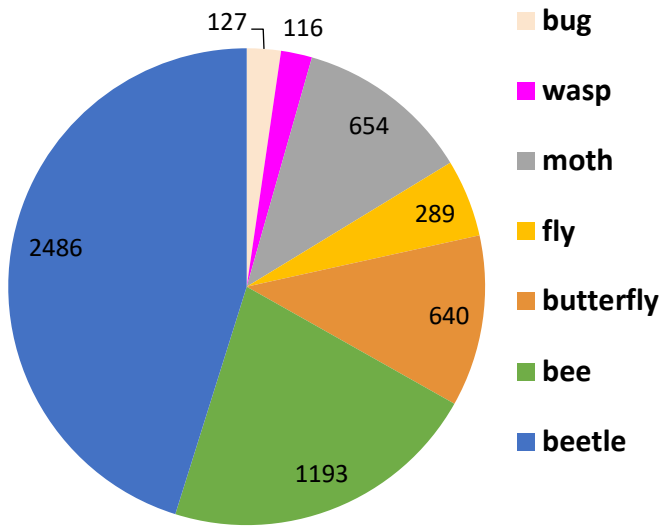
SIX-YEAR RESULTS:

- 5495 pollinators counted over six years.
- 200+ different pollinator species observed with highest numbers being beetles, then bees.
- 54 flowering plant species identified.
- Hundreds of community members participated.
- Observation: pollinators abundance is highly dependent on blooms, and weather/drought.

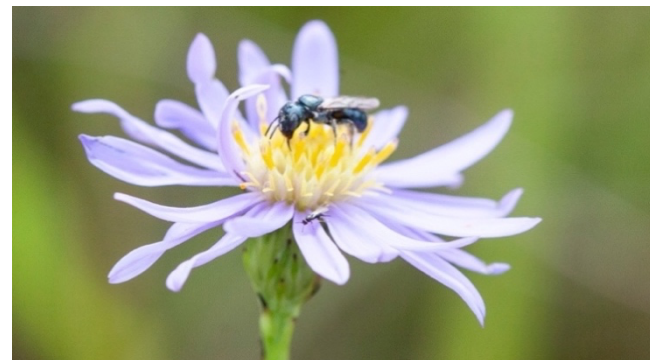
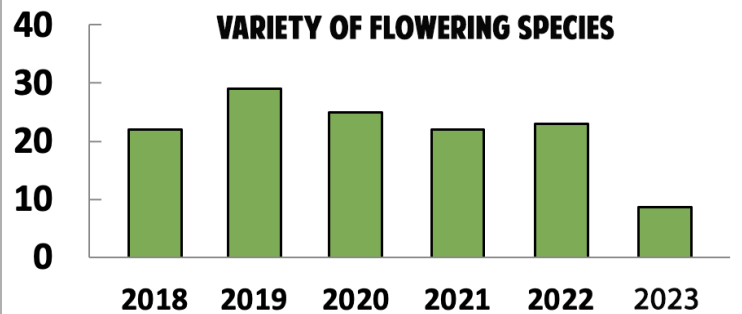
TOTAL POLLINATORS COUNTED



Pollinator Count Totals



VARIETY OF FLOWERING SPECIES



DESCRIPTION: This community science field study is a six-year count of pollinators on host and nectar plants. Three counts per year were conducted summer of 2018 – 2023. Pollinators were counted along four transects of 200 feet long x 20 feet wide each, over 14 acres. *Butterfly Landing* is a conversion from corn crop to native prairie in Pine Point Regional Park. The restoration is a collaboration with Washington County Parks to increase biodiversity and plants for pollinators. Plant selection emphasis was on nectar sources for lepidoptera. This study aims to determine if an increase in pollinator habitat will affect pollinator abundance, and to record the pollinator and plant species present. Plugs and seeds were planted in 2016 and 2017 including: *Liatrus*, native lupine *Lupinus perennis*, butterfly weed *Asclepias tuberosa*, prairie flox, showy goldenrod *Solidago speciosa*, stiff goldenrod *Oligoneuron rigidum*, common milkweed *Asclepias syriaca*, butterfly milkweed *Asclepias tuberosa*, New England aster *Symphoricarpon novae-angliae*, *Coreopsis* spp, fireweed, anise hyssop *Agastache foeniculum*, *Monarda fistulosa*. In the field, we noted the insects abundance is highly dependent on weather conditions, drought and blooms. Note 2023 drought resulted in low blooms and low insect abundance.

PARTNERS:

Pollinator Friendly Alliance, Washington County Parks, Wash Co Conservation District

Website:

www.pollinatorfriendly.org
iNaturalist observations:
[butterflylanding](https://www.inaturalist.org/observations?location=Butterfly+Landing)